

Teacher's Word Match Activity

Instructions: Match the following genetic terms to their corresponding parts of the illustration: **base pair**, **cell**, **chromosome**, **DNA** (Deoxyribonucleic Acid), **double helix***, **genes**, **nucleus**

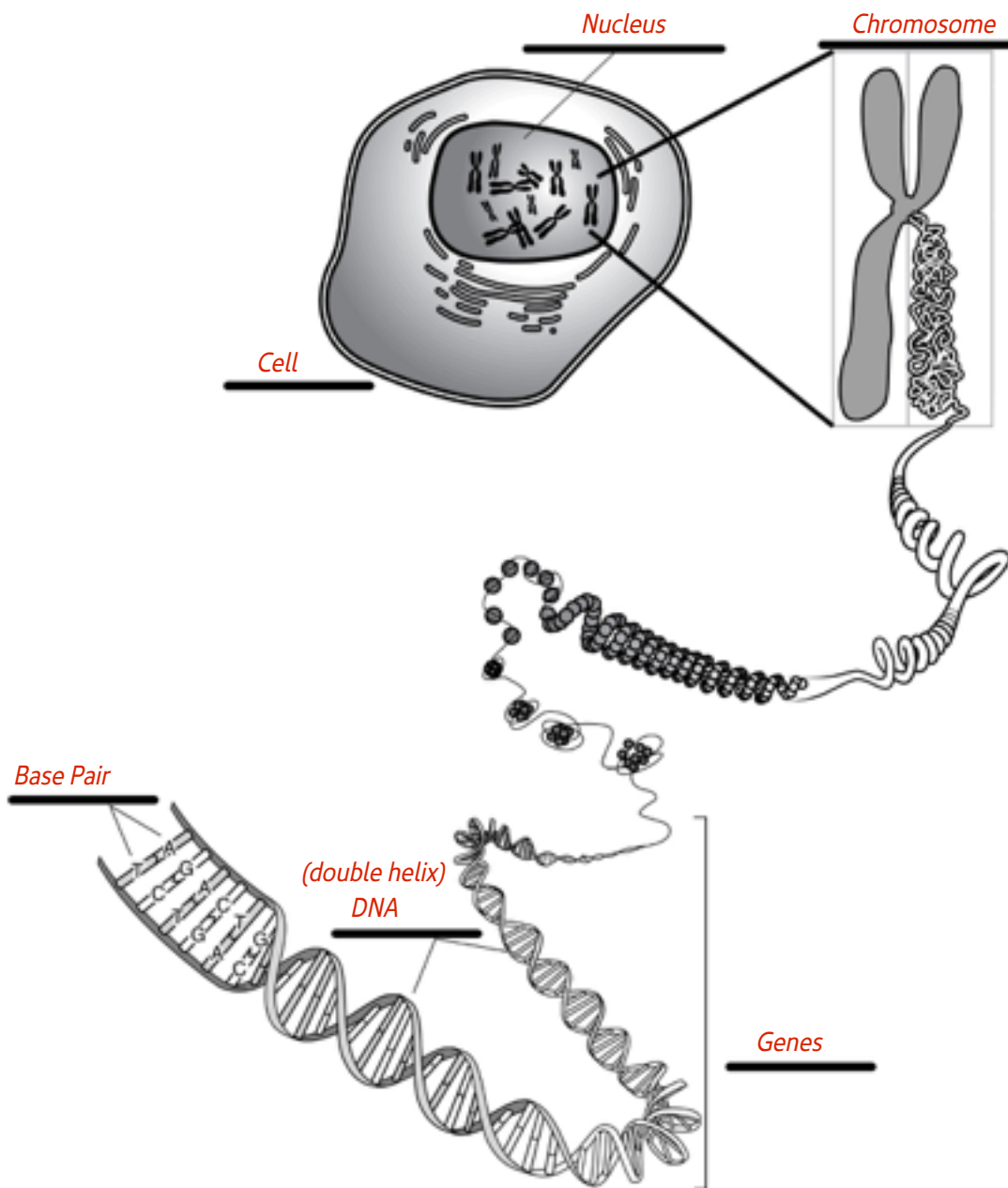


Illustration Source: Talking Glossary of Genetic Terms <http://www.genome.gov/glossary.cfm?key=chromosome>